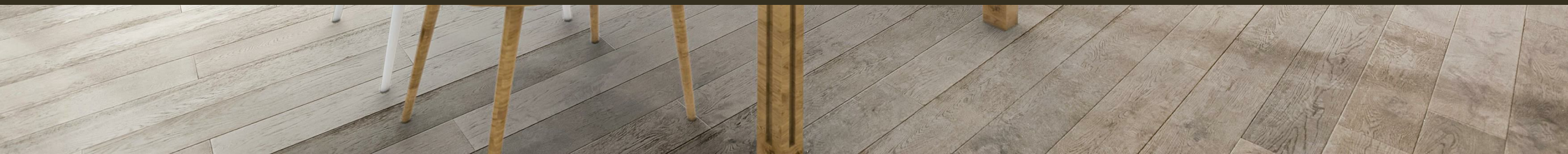




Compass House, Chelsea Creek  
Fulham SW6

GARTON JONES.COM



# Compass House, Chelsea Creek Fulham, SW6

GARTON JONES.COM

13 Park Street  
Chelsea Creek  
London  
SW6 2FS

Sales +44 (0) 20 7824 7090  
paul@gartonjones.com  
www.gartonjones.com

## £1,775,000 Leasehold

### 3-Bedroom Sub-Penthouse with Wraparound Balcony

A rare chance to purchase this stylish 3-bedroom sub-penthouse in the prestigious Chelsea Creek development by Berkeley Homes.

Offering 1,475sqft (137sqm) of well-proportioned space, the apartment features a large open-plan living/dining room with access to a wraparound balcony and far-reaching views. The master bedroom includes its own balcony, excellent storage, and a luxury en-suite. Two further double bedrooms share a guest bathroom. A modern kitchen with integrated appliances, a utility room, and ample storage complete the home.

#### Development Features

- 24-hour concierge
- Residents' spa, gym, and landscaped gardens
- Secure setting near Imperial Wharf Overground
- Short walk to King's Road and Fulham Broadway

\*\* Please note that the furniture may differ to that shown in the current photos\*\*

Lease - 999 years from 2010  
Service Charge - £10932pa  
Ground Rent - £550pa

Council Tax — London Borough Of Hammersmith & Fulham  
— Band H  
EPC B (81)

- Sub Penthouse — 7th Floor
- Three Bedrooms
- Unique Layout
- 1475sqft / 137sqm
- Two Balconies
- Right To Park
- Kitchen / Breakfast Room
- 24 Hour Concierge
- Residents Gym & Spa
- EPC B (81)



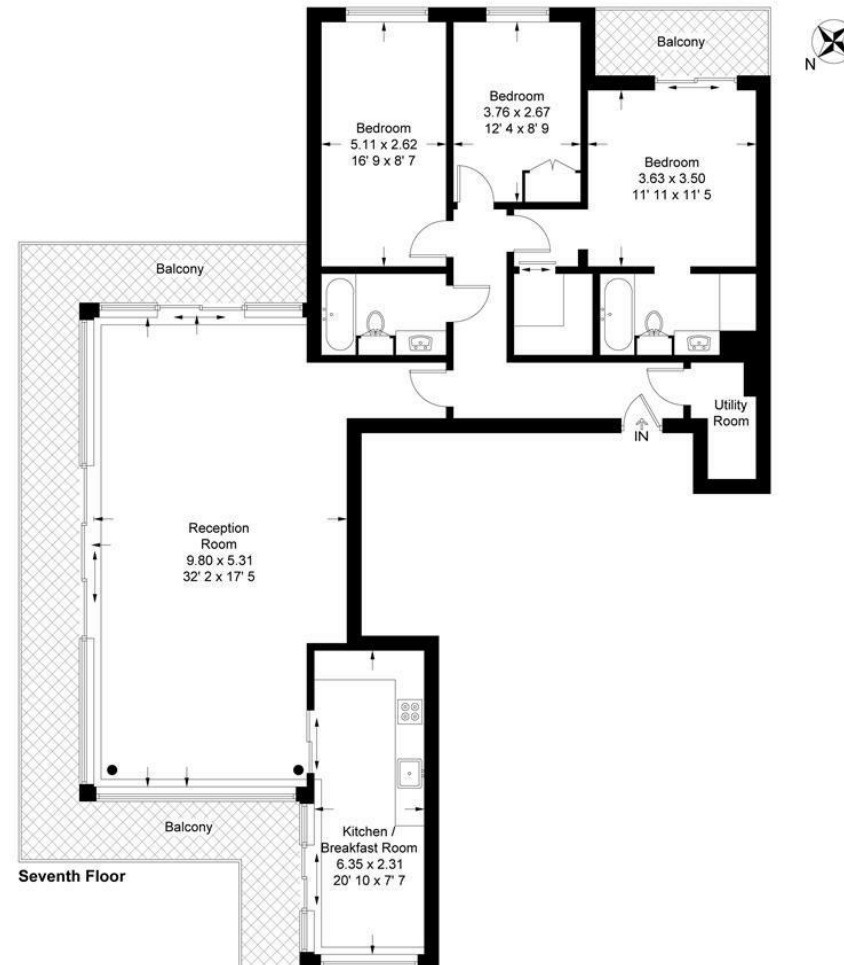
EPC certificate available on request.



## Compass House

Approximate Gross Internal Area = 1475 sq ft / 137 sq m

GARTON JONES  
LONDON



This plan is not to scale and must be used as layout guidance only. All measurements and areas are approximate and should not be relied upon to provide accurate information. This plan must not be relied upon when making property valuations, design considerations or any other such relevant decisions. We accept no responsibility or liability (whether in contract, tort or otherwise) in relation to any loss whatsoever arising from or in connection with any use of this plan or the adequacy, accuracy or completeness of it or any information within it.



